

Scaled data based on original data using  
LM-79-08 Approved Method: Electrical and Photometric Measurements of Solid-State  
Lighting Products

Test Report Prepared for  
Cooper Lighting Solutions  
(formerly Eaton)

Brand: LUMIERE

Report Number: G2-1802-569-47

Luminaire Tested: **203-SS-8LED4036-12-CS-OSL**

Test Date: 04/06/18

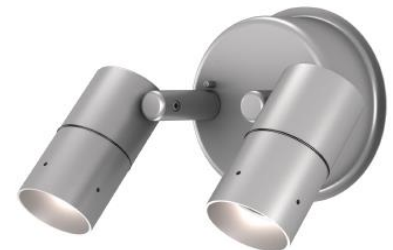
**Test Information**

Test Method: LM-79-08  
Report Number: G2-1802-569-47  
REPORT IS SCALED FROM IESNA LM-79-08 TEST DATA (G2-1802-569-47)  
Test Lab: INNOVATION CENTER(G2)  
Test Date: 04/06/18  
Issue Date: 3/3/2020  
Manufacturer: COOPER LIGHTING SOLUTIONS (FORMERLY EATON)  
Product Line: LUMIERE  
Catalog Number: 203-SS-8LED4036-12-CS-OSL  
Description: CAMBRIA 203 LED LUMINAIRE, 8 WATT, 4000K CCT, 36 DEGREE WIDE OPTIC,  
REGRESSED HOOD SILVER, OVERALL SPREAD LENS  
Light Source: (1) SORAA 4000K 90 CRI LED  
SM16-07-36D-940-03  
Ballast/Driver: (1) CHROMA POWER SUPPLY IN0004

**Summary**

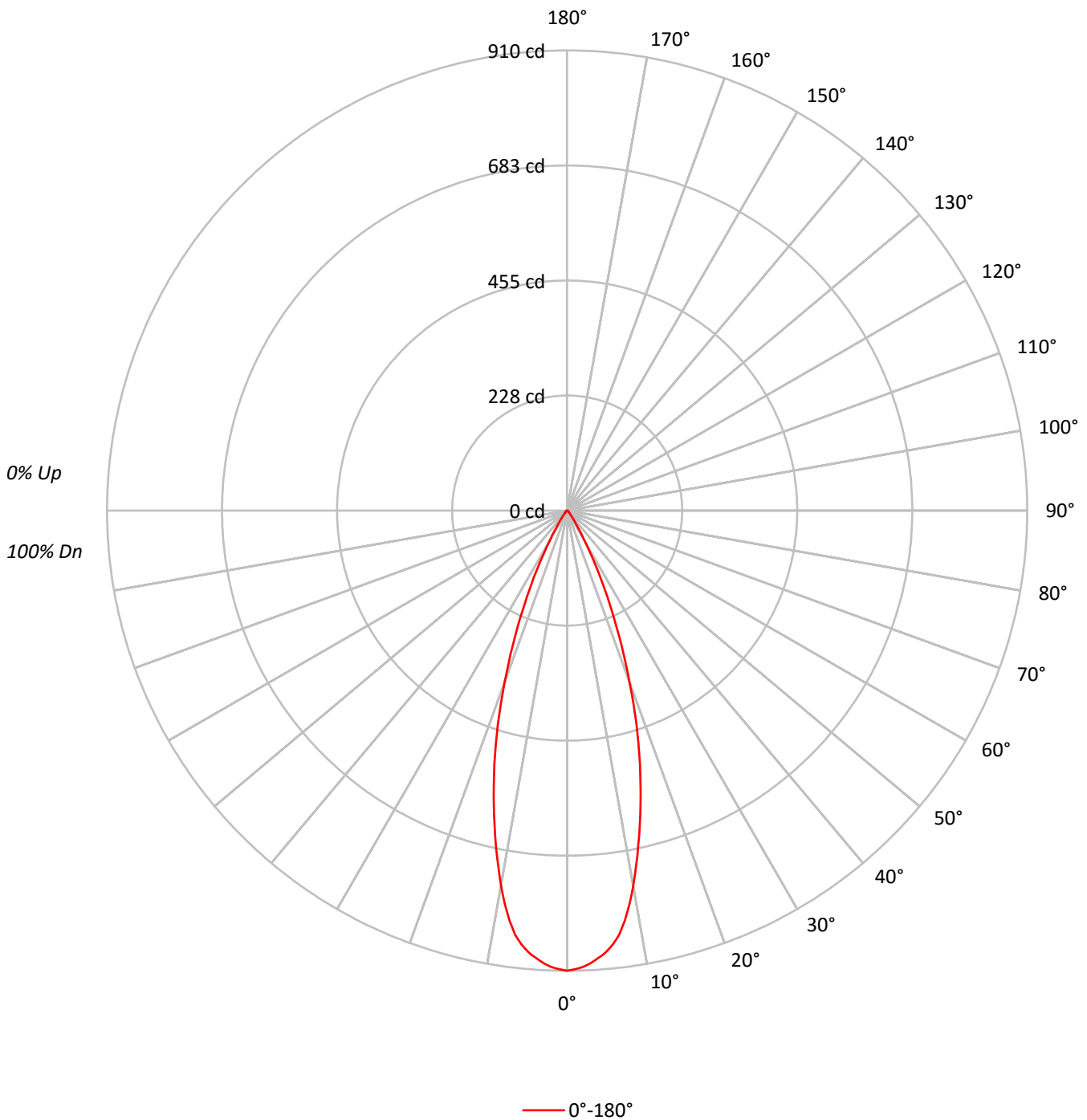
Lumens per Lamp: N/A  
Luminaire Lumens: 348.6 lumens  
Efficiency: N/A  
Efficacy: 45.9 lumens/watt  
Spacing Criteria (0/90/45): 0.58 / 0.58 / 0.57  
Luminous Opening: Circular (Dia: 0.17' x H: 0')  
CIE Type: Direct

Input Watts (W): 7.6  
Input Voltage (V): 12.0  
Input Current (Ain): 0.671  
Voltage Rise (V): NR  
Power Factor: 0.9903  
Total Harmonic Distortion (THDi): 27.5%  
Frequency (hertz): 60  
Stabilization Time: 0.5 HR  
Operation Time: 3 HR  
Ambient Temperature (°C): 25.2  
Test Distance: 25 FT



TEST NUMBER: G2-1802-569-47  
CATALOG NUMBER: 203-SS-8LED4036-12-CS-OSL

### Luminous Intensity Polar Plot





TEST NUMBER: G2-1802-569-47

CATALOG NUMBER: 203-SS-8LED4036-12-CS-OSL

**COEFFICIENT OF UTILIZATION - ZONAL CAVITY METHOD:**

RF	20				20				20				20				20			
RC	80				70				50				30				10	0		
RW	70	50	30	10	70	50	30	10	50	30	10		50	30	10		50	30	10	0
RCR																				
0	119	119	119	119	116	116	116	116	111	111	111		106	106	106		102	102	102	100
1	114	112	110	108	112	110	108	106	106	104	103		102	101	100		99	98	97	95
2	110	106	103	100	108	104	101	99	101	99	97		98	96	95		96	94	93	91
3	106	101	97	93	104	99	96	93	97	94	91		94	92	90		92	90	88	87
4	102	96	91	88	100	95	91	87	93	89	86		91	88	85		89	87	84	83
5	98	92	87	83	97	91	86	83	89	85	82		87	84	82		86	83	81	80
6	95	88	83	79	93	87	82	79	85	82	79		84	81	78		83	80	78	76
7	91	84	79	76	90	83	79	76	82	78	75		81	78	75		80	77	75	73
8	88	81	76	73	87	80	76	73	79	75	72		78	75	72		77	74	72	71
9	85	78	73	70	84	77	73	70	76	72	70		76	72	69		75	72	69	68
10	83	75	70	67	82	75	70	67	74	70	67		73	69	67		72	69	67	66

**AVERAGE LUMINANCE (cd/sqm):**

	0°
0°	448975
5°	434347
10°	377246
15°	286550
20°	189541
25°	102344
30°	40449
35°	14455
40°	7085
45°	4186
50°	3070
55°	2581
60°	1974
65°	2335
70°	1443
75°	1906
80°	0
85°	0



TEST NUMBER: G2-1802-569-47

CATALOG NUMBER: 203-SS-8LED4036-12-CS-OSL

**ZONAL LUMENS:**

Zone	Lumens	% Fixture
0°-10°	80.0	22.9
10°-20°	152.7	43.8
20°-30°	87.4	25.1
30°-40°	18.0	5.2
40°-50°	5.1	1.5
50°-60°	2.9	0.8
60°-70°	1.6	0.5
70°-80°	0.9	0.3
80°-90°	0.0	0.0
90°-100°	0.0	0.0
100°-110°	0.0	0.0
110°-120°	0.0	0.0
120°-130°	0.0	0.0
130°-140°	0.0	0.0
140°-150°	0.0	0.0
150°-160°	0.0	0.0
160°-170°	0.0	0.0
170°-180°	0.0	0.0
0°-30°	320.1	91.8
0°-40°	338.1	97.0
0°-60°	346.1	99.3
0°-90°	348.6	100.0
90°-120°	0.0	0.0
90°-150°	0.0	0.0
90°-180°	0.0	0.0
0°-180°	348.6	100.0

**CANDELA DISTRIBUTION:**

	0°	Flux
0°	910	
5°	877	80
15°	561	153
25°	188	87
35°	24	18
45°	6	5
55°	3	3
65°	2	2
75°	1	1
85°	0	0
90°	0	



TEST NUMBER: G2-1802-569-47

CATALOG NUMBER: 203-SS-8LED4036-12-CS-OSL

**CANDELA DISTRIBUTION (FULL):**

0°	
0°	910
1°	907
2°	903
3°	896
4°	887
5°	877
6°	863
7°	845
8°	819
9°	788
10°	753
11°	715
12°	677
13°	639
14°	600
15°	561
16°	522
17°	482
18°	443
19°	402
20°	361
21°	323
22°	287
23°	251
24°	218
25°	188
26°	161
27°	135
28°	111
29°	89
30°	71
32.5°	39
35°	24
37.5°	15
40°	11
42.5°	8
45°	6
47.5°	5
50°	4
52.5°	4
55°	3
57.5°	3
60°	2
62.5°	2
65°	2



TEST NUMBER: G2-1802-569-47

CATALOG NUMBER: 203-SS-8LED4036-12-CS-OSL

**CANDELA DISTRIBUTION (continued):**

	0°
67.5°	1
70°	1
72.5°	1
75°	1
77.5°	1
80°	0
82.5°	0
85°	0
87.5°	0
90°	0

(END OF REPORT)